

Morsetti Clamps



Morsetti per Balaustre e Parapetti
Clamps for Balustrades and Parapets

pag. 0624



Morsetti per Box doccia
Clamps for Showers

pag. 0646



Morsetti per Porte
Clamps for Doors
- Linea GFS/GFS Line
- Linea Standard/Standard Line

pag. 0654

pag. 0657

Clamps

Morsetti





Clamps

Morsetti

Morsetti per Balaustre e Parapetti

Clamps for Balustrades and Parapets

NORMATIVA DIN / EN 12600
DIN / EN 12600 STANDARD



I morsetti per parapetti inseriti nel nostro catalogo sono testati secondo Normativa Europea EN-12600. La normativa prevede che il vetro non deve rompersi neppure sotto carichi estremi come una forza dinamica di 50 kg. Tutti i morsetti sono stati approvati dall'ufficio federale tedesco AbZ, massimo livello competente dei controlli delle costruzioni.

The clamps for balustrades of our catalogue are tested according to European Standard EN-12600. According to the legislation, the glass doesn't have to break even under extreme loads as a dynamic force of 50 kg. All the clamps have been approved by the german federal AbZ office, which represents the highest competent level of controls in the construction field.



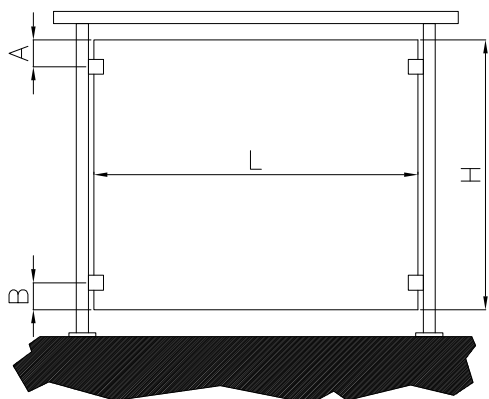
Sono stati inoltre eseguiti dei test che permettono di determinare la larghezza massima dei vetri utilizzabili in varie casistiche di applicazione. Di seguito sono illustrate delle tabelle riassuntive che forniscono i risultati dei test, espressi come larghezza massima del vetro da installare.

Le prove sono state effettuate prendendo in considerazione le seguenti varianti:

- modello del morsetto
- utilizzo di spine o piastrini di sicurezza
- tipo e spessore del vetro
- luogo di installazione
- spinta del vento (su esterni)

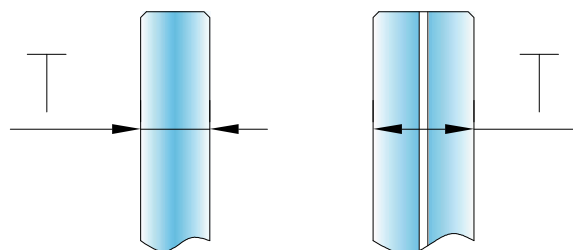
Even tests that allow to determine the maximum width of the glass to be used in different applications have been performed. Here below there are some summary tables which provide the test results, express as maximum width of the glass to be installed. The tests have been carried out taking into consideration the following variables:

- model of clamp
- use of safety pins or security bases
- type and thickness of the glass
- location of installation
- wind strength (on the outside)



	minimo / minimum	massimo / maximum
A	100 mm	150 mm
B	100 mm	150 mm
H	800 mm	1000 mm
L	500 mm	vedi tabelle/see charts

Tipi di vetro utilizzati / Typologies of glass



- V1 = monolitico temprato, testato con Heat Soak Test
monolithic tempered glass, tested with HeatSoak Test
- V2 = stratificato di sicurezza
laminated safety glass
- V3 = temprato stratificato
laminated tempered glass
- V4 = temprato termico stratificato
thermic laminated tempered glass

Installazione su ESTERNI senza spine e
senza piastrini di sicurezza

*OUTSIDE installation without security pins
and without security base*

Morsetto / Clamp	Materiale / Material	Vetro / Glass	T mm	Spinta del vento kN/m ² / Wind pressure kN/m ²					
				0,64	1,00	1,04	1,40	1,60	2,20
				L (max) mm					
Art. 42	AISI 316	V1	8	1500	1400	1400	1000	1000	800
Art. 42	AISI 316	V1	10	1500	1500	1500	1400	1400	800
Art. 42	AISI 316	V3	8,76	1200	1000	800	500	500	
Art. 42	AISI 316	V3	9,52	1200	1000	800	500	500	
Art. 42	AISI 316	V4	8,76	800	500	500			
Art. 42	AISI 316	V4	9,52	800	500	500			
Art. 43	AISI 316	V1	12	1600	1600	1600	1600	1600	1400
Art. 43	AISI 316	V1	16	1600	1600	1600	1600	1600	1600
Art. 43	AISI 316	V2	12,76	1200	1000	800	800	500	500
Art. 43	AISI 316	V2	13,52	1200	1000	800	800	500	500
Art. 43	AISI 316	V2	16,76	1500	1200	1200	1000	1000	800
Art. 43	AISI 316	V2	17,52	1500	1200	1200	1000	1000	800
Art. 43	AISI 316	V3	12,76	1600	1500	1400	1200	1200	1000
Art. 43	AISI 316	V3	13,52	1600	1500	1400	1200	1200	1000
Art. 43	AISI 316	V3	16,76	1600	1600	1600	1600	1500	1200
Art. 43	AISI 316	V3	17,52	1600	1600	1600	1600	1500	1200
Art. 43	AISI 316	V4	12,76	1500	1000	1000	800	800	500
Art. 43	AISI 316	V4	13,52	1500	1000	1000	800	800	500
Art. 43	AISI 316	V4	16,76	1500	1500	1500	1200	1200	1000
Art. 43	AISI 316	V4	17,52	1500	1500	1500	1200	1200	1000
Art. 45	AISI 316	V1	12	1500	1500	1500	1500	1500	1400
Art. 45	AISI 316	V3	10,76	1500	1200	1200	800	800	800
Art. 45	AISI 316	V3	11,52	1500	1200	1200	800	800	800
Art. 45	AISI 316	V3	12,76	1500	1500	1400	1200	1200	800
Art. 45	AISI 316	V4	10,76	1200	800	800	500	500	500
Art. 45	AISI 316	V4	11,52	1200	800	800	500	500	500
Art. 45	AISI 316	V4	12,76	1200	800	800	800	800	500
Art. 46	AISI 316	V1	8	1400	1400	1400	1200	1000	800
Art. 46	AISI 316	V1	10	1400	1400	1400	1400	1400	1000
Art. 46	AISI 316	V1	12	1400	1400	1400	1400	1400	1400
Art. 46	AISI 316	V3	8,76	1200	800	800	800	800	500
Art. 46	AISI 316	V3	9,52	1200	800	800	800	800	500
Art. 46	AISI 316	V3	10,76	1400	1200	1000	1000	800	800
Art. 46	AISI 316	V3	11,52	1400	1200	1000	1000	800	800
Art. 46	AISI 316	V3	12,76	1400	1400	1400	1200	1000	800
Art. 46	AISI 316	V4	8,76	800	500	500			
Art. 46	AISI 316	V4	9,52	800	500	500			
Art. 46	AISI 316	V4	10,76	1000	800	800	800	500	
Art. 46	AISI 316	V4	11,52	1000	800	800	800	500	
Art. 46	AISI 316	V4	12,76	1200	1000	1000	800	800	500

Morsetti per Balaustre e Parapetti

Clamps for Balustrades and Parapets

NORMATIVA DIN / EN 12600
DIN / EN 12600 STANDARD



**Installazione su INTERNI senza spine e
senza piastrini di sicurezza**

***INSIDE installation without security pins
and without security base***

Morsetto / Clamp	Materiale / Material	Vetro / Glass	T mm	L (max) mm
Art. 40	Zama / Zamak	V1	8	1200
Art. 41	Zama / Zamak	V3	8,76	1200
Art. 41	Zama / Zamak	V3	9,52	1200
Art. 42	Zama / Zamak	V1	8	1500
Art. 42	Zama / Zamak	V1	10	1500
Art. 42	Zama / Zamak	V3	8,76	1500
Art. 42	Zama / Zamak	V3	9,52	1500
Art. 42	Zama / Zamak	V4	8,76	1500
Art. 42	Zama / Zamak	V4	9,52	1500
Art. 43	Zama / Zamak	V1	12	1600
Art. 43	Zama / Zamak	V1	16	1600
Art. 43	Zama / Zamak	V2	12,76	1500
Art. 43	Zama / Zamak	V2	13,52	1500
Art. 43	Zama / Zamak	V2	16,76	1500
Art. 43	Zama / Zamak	V2	17,52	1500
Art. 43	Zama / Zamak	V3	12,76	1600
Art. 43	Zama / Zamak	V3	13,52	1600
Art. 43	Zama / Zamak	V3	16,76	1600
Art. 43	Zama / Zamak	V3	17,52	1600
Art. 43	Zama / Zamak	V4	12,76	1500
Art. 43	Zama / Zamak	V4	13,52	1500
Art. 43	Zama / Zamak	V4	16,76	1500
Art. 43	Zama / Zamak	V4	17,52	1500
Art. 45	Zama / Zamak	V1	12	1500
Art. 45	Zama / Zamak	V3	10,76	1500
Art. 45	Zama / Zamak	V3	11,52	1500
Art. 45	Zama / Zamak	V3	12,76	1500
Art. 45	Zama / Zamak	V4	10,76	1500
Art. 45	Zama / Zamak	V4	11,52	1500
Art. 45	Zama / Zamak	V4	12,76	1500
Art. 46	Zama / Zamak	V1	8	1400
Art. 46	Zama / Zamak	V1	10	1600
Art. 46	Zama / Zamak	V1	12	1600
Art. 46	Zama / Zamak	V3	8,76	1400
Art. 46	Zama / Zamak	V3	9,52	1400
Art. 46	Zama / Zamak	V3	10,76	1600
Art. 46	Zama / Zamak	V3	11,52	1600
Art. 46	Zama / Zamak	V3	12,76	1600
Art. 46	Zama / Zamak	V4	8,76	1400
Art. 46	Zama / Zamak	V4	9,52	1400
Art. 46	Zama / Zamak	V4	10,76	1600
Art. 46	Zama / Zamak	V4	11,52	1600
Art. 46	Zama / Zamak	V4	12,76	1600

Morsetto / Clamp	Materiale / Material	Vetro / Glass	T mm	L (max) mm
Art. 40	AlSi 316	V1	8	1200
Art. 41	AlSi 316	V3	8,76	1200
Art. 41	AlSi 316	V3	9,52	1200
Art. 42	AlSi 316	V1	8	1500
Art. 42	AlSi 316	V1	10	1500
Art. 42	AlSi 316	V3	8,76	1500
Art. 42	AlSi 316	V3	9,52	1500
Art. 42	AlSi 316	V4	8,76	1500
Art. 42	AlSi 316	V4	9,52	1500
Art. 43	AlSi 316	V1	12	1600
Art. 43	AlSi 316	V1	16	1600
Art. 43	AlSi 316	V2	12,76	1500
Art. 43	AlSi 316	V2	13,52	1500
Art. 43	AlSi 316	V2	16,76	1500
Art. 43	AlSi 316	V2	17,52	1500
Art. 43	AlSi 316	V3	12,76	1600
Art. 43	AlSi 316	V3	13,52	1600
Art. 43	AlSi 316	V3	16,76	1600
Art. 43	AlSi 316	V3	17,52	1600
Art. 43	AlSi 316	V4	12,76	1500
Art. 43	AlSi 316	V4	13,52	1500
Art. 43	AlSi 316	V4	16,76	1500
Art. 43	AlSi 316	V4	17,52	1500
Art. 45	AlSi 316	V1	12	1500
Art. 45	AlSi 316	V3	10,76	1500
Art. 45	AlSi 316	V3	11,52	1500
Art. 45	AlSi 316	V3	12,76	1500
Art. 45	AlSi 316	V4	10,76	1500
Art. 45	AlSi 316	V4	11,52	1500
Art. 45	AlSi 316	V4	12,76	1500
Art. 46	AlSi 316	V1	8	1400
Art. 46	AlSi 316	V1	10	1600
Art. 46	AlSi 316	V1	12	1600
Art. 46	AlSi 316	V3	8,76	1400
Art. 46	AlSi 316	V3	9,52	1400
Art. 46	AlSi 316	V3	10,76	1600
Art. 46	AlSi 316	V3	11,52	1600
Art. 46	AlSi 316	V3	12,76	1600
Art. 46	AlSi 316	V4	8,76	1400
Art. 46	AlSi 316	V4	9,52	1400
Art. 46	AlSi 316	V4	10,76	1600
Art. 46	AlSi 316	V4	11,52	1600
Art. 46	AlSi 316	V4	12,76	1600

**NORMATIVA DIN / EN 12600
DIN / EN 12600 STANDARD**

**Installazione su ESTERNI con spine e senza
piastrini di sicurezza**

***OUTSIDE installation with security pins and
without security base***

Morsetto / Clamp	Materiale / Material	Vetro / Glass	T mm	Spinta del vento kN/m ² / Wind pressure kN/m ²					
				0,64	1,00	1,04	1,40	1,60	2,20
				L (max) mm					
Art. 43	AISI 316	V1	12	1600	1600	1600	1600	1500	1400
Art. 43	AISI 316	V1	16	1600	1600	1600	1600	1600	1600
Art. 43	AISI 316	V3	12,76	1500	1200	1200	800	800	500
Art. 43	AISI 316	V3	13,52	1500	1200	1200	800	800	500
Art. 43	AISI 316	V3	16,76	1600	1600	1600	1400	1200	1000
Art. 43	AISI 316	V3	17,52	1600	1600	1600	1400	1200	1000
Art. 45	AISI 316	V3	12,76	1600	1400	1400	1000	1000	800

**Installazione su INTERNI con spine e senza
piastrini di sicurezza**

***INSIDE installation with security pins and
without security base***

Morsetto / Clamp	Materiale / Material	Vetro / Glass	T mm	L (max) mm
Art. 43	Zama / Zamak	V1	12	1600
Art. 43	Zama / Zamak	V1	16	1600
Art. 43	Zama / Zamak	V3	12,76	1600
Art. 43	Zama / Zamak	V3	13,52	1600
Art. 43	Zama / Zamak	V3	16,76	1600
Art. 43	Zama / Zamak	V3	17,52	1600
Art. 45	Zama / Zamak	V3	12,76	1600

Morsetto / Clamp	Materiale / Material	Vetro / Glass	T mm	L (max) mm
Art. 43	AISI 316	V1	12	1600
Art. 43	AISI 316	V1	16	1600
Art. 43	AISI 316	V3	12,76	1600
Art. 43	AISI 316	V3	13,52	1600
Art. 43	AISI 316	V3	16,76	1600
Art. 43	AISI 316	V3	17,52	1600
Art. 45	AISI 316	V3	12,76	1600

Morsetti per Balaustre e Parapetti

Clamps for Balustrades and Parapets

NORMATIVA DIN / EN 12600
DIN / EN 12600 STANDARD



Installazione su ESTERNI senza spine e con piastrini di sicurezza

OUTSIDE installation without security pins and with security base

Morsetto / Clamp	Materiale / Material	Vetro / Glass	T mm	Spinta del vento kN/m ² / Wind pressure kN/m ²					
				0,64	1,00	1,04	1,40	1,60	2,20
				L (max) mm					
Art. 43	AISI 316	V1	12	1600	1600	1600	1600	1500	1400
Art. 43	AISI 316	V1	16	1600	1600	1600	1600	1600	1600
Art. 43	AISI 316	V3	12,76	1500	1200	1200	800	800	500
Art. 43	AISI 316	V3	13,52	1500	1200	1200	800	800	500
Art. 43	AISI 316	V3	16,76	1600	1500	1500	1400	1200	1000
Art. 43	AISI 316	V3	17,52	1600	1500	1500	1400	1200	1000
Art. 43	AISI 316	V4	12,76	1500	800	800	500	500	500
Art. 43	AISI 316	V4	13,52	1500	800	800	500	500	500
Art. 43	AISI 316	V4	16,76	1500	1200	1200	1000	800	500
Art. 43	AISI 316	V4	17,52	1500	1200	1200	1000	800	500
Art. 46	AISI 316	V1	8	1400	1400	1400	1200	1000	800
Art. 46	AISI 316	V1	10	1400	1400	1400	1400	1400	1000
Art. 46	AISI 316	V1	12	1400	1400	1400	1400	1400	1400
Art. 46	AISI 316	V3	8,76	1200	800	800	800	800	500
Art. 46	AISI 316	V3	9,52	1200	800	800	800	800	500
Art. 46	AISI 316	V3	10,76	1400	1200	1000	1000	800	800
Art. 46	AISI 316	V3	11,52	1400	1200	1000	1000	800	800
Art. 46	AISI 316	V3	12,76	1400	1400	1400	1200	1000	800

Installazione su INTERNI senza spine e con piastrini di sicurezza

INSIDE installation without security pins and with security base

Morsetto / Clamp	Materiale / Material	Vetro / Glass	T mm	L (max) mm
Art. 43	Zama / Zamak	V1	12	1600
Art. 43	Zama / Zamak	V1	16	1600
Art. 43	Zama / Zamak	V3	12,76	1600
Art. 43	Zama / Zamak	V3	13,52	1600
Art. 43	Zama / Zamak	V3	16,76	1600
Art. 43	Zama / Zamak	V3	17,52	1600
Art. 43	Zama / Zamak	V4	12,76	1500
Art. 43	Zama / Zamak	V4	13,52	1500
Art. 43	Zama / Zamak	V4	16,76	1500
Art. 43	Zama / Zamak	V4	17,52	1500
Art. 46	Zama / Zamak	V1	8	1400
Art. 46	Zama / Zamak	V1	10	1400
Art. 46	Zama / Zamak	V1	12	1400
Art. 46	Zama / Zamak	V3	8,76	1400
Art. 46	Zama / Zamak	V3	9,52	1400
Art. 46	Zama / Zamak	V3	10,76	1400
Art. 46	Zama / Zamak	V3	11,52	1400
Art. 46	Zama / Zamak	V3	12,76	1400

Morsetto / Clamp	Materiale / Material	Vetro / Glass	T mm	L (max) mm
Art. 43	AISI 316	V1	12	1600
Art. 43	AISI 316	V1	16	1600
Art. 43	AISI 316	V3	12,76	1600
Art. 43	AISI 316	V3	13,52	1600
Art. 43	AISI 316	V3	16,76	1600
Art. 43	AISI 316	V3	17,52	1600
Art. 43	AISI 316	V4	12,76	1500
Art. 43	AISI 316	V4	13,52	1500
Art. 43	AISI 316	V4	16,76	1500
Art. 43	AISI 316	V4	17,52	1500
Art. 45	AISI 316	V1	8	1400
Art. 45	AISI 316	V1	10	1400
Art. 45	AISI 316	V1	12	1400
Art. 45	AISI 316	V3	8,76	1400
Art. 45	AISI 316	V3	9,52	1400
Art. 45	AISI 316	V3	10,76	1400
Art. 45	AISI 316	V3	11,52	1400
Art. 45	AISI 316	V3	12,76	1400



Morsetti per Balaustre e Parapetti

Clamps for Balustrades and Parapets



MORSETTO MEZZO TONDO Art. 40

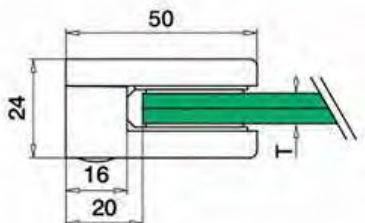
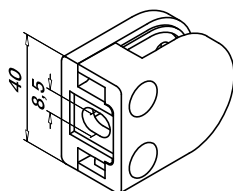
in acciaio AISI 304 / 316

Dimensioni 40x50 mm
Per vetro da 6 a 8 mm

HALF MOON CLAMP Art. 40

in stainless steel AISI 304 / 316

Dimensions 40x50 mm
For glass thickness from 6 up to 8 mm



Box: 04 pz/pcs

Codice/Code	Materiale/Material	Finiture/Finishes
E04T40304	acciaio/stainless steel AISI 304	satinato/satin
E04T40316	acciaio/stainless steel AISI 316	satinato/satin

I prezzi si intendono guarnizioni escluse/The prices are gaskets excluded

MORSETTO MEZZO TONDO

Art. 40 PER TUBO

in acciaio AISI 304 / 316

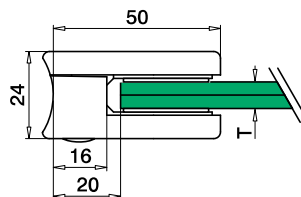
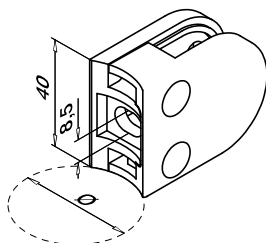
Dimensioni 40x50 mm
Per vetro da 6 a 8 mm

HALF MOON CLAMP

Art. 40 FOR TUBE

in stainless steel AISI 304 / 316

Dimensions 40x50 mm
For glass thickness from 6 up to 8 mm



Box: 04 pz/pcs

Codice/Code	Materiale/Material	Finiture/Finishes	Ø Tubo/Tube
E04T40304.R1	acciaio/stainless steel AISI 304	satinato/satin	Ø 33,7 mm
E04T40304.R2	acciaio/stainless steel AISI 304	satinato/satin	Ø 42,4 mm
E04T40316.R1	acciaio/stainless steel AISI 316	satinato/satin	Ø 33,7 mm
E04T40316.R2	acciaio/stainless steel AISI 316	satinato/satin	Ø 42,4 mm

I prezzi si intendono guarnizioni escluse/The prices are gaskets excluded

GUARNIZIONI PER MORSETTO

Art. 40

GASKETS FOR CLAMP

Art. 40



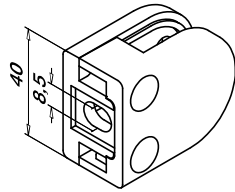
Codice/Code	Spessore vetro/Glass thickness
E04G40060	6 mm
E04G40067	6,76 mm
E04G40080	8 mm

Box: 08 pz/pcs

MORSETTO MEZZO TONDO

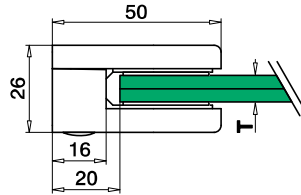
Art. 40 in Zama

Dimensioni 40x50 mm
Per vetro da 6 a 8 mm



HALF MOON CLAMP Art. 40 in Zamak

Dimensions 40x50 mm
For glass thickness from 6 up to 8 mm



Box: 04 pz/pcs

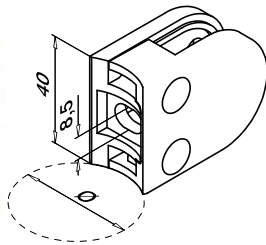
Codice/Code	Finiture/Finishes
E04T40000	zama grezzo/raw zamak
E04T40016	cromo opaco/opaque chrome
E04T40017	cromo lucido/polished chrome
E04T40019	effetto acciaio inox/similar stainless steel
E04T40031	nero RAL 9005/RAL 9005 black
E04T40032	bianco RAL 9016/RAL 9016 white
E04T40036	grigio alluminio RAL 9006/RAL 9006 grey aluminium

I prezzi si intendono guarnizioni escluse/The prices are gaskets exluded

MORSETTO MEZZO TONDO

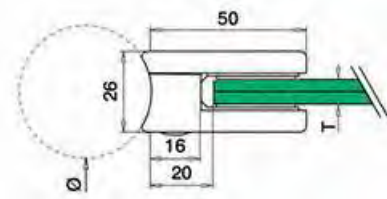
Art. 40 PER TUBO in Zama

Dimensioni 40x50 mm
Per vetro da 6 a 8 mm



HALF MOON CLAMP Art. 40 FOR TUBE

Dimensions 40x50 mm
For glass thickness from 6 up to 8 mm



Box: 04 pz/pcs

Codice/Code	Finiture/Finishes	Ø Tubo/Tube
E04T40000.R1	zama grezzo/raw zamak	Ø 33,7 mm
E04T40000.R2	zama grezzo/raw zamak	Ø 42,4 mm
E04T40017.R1	cromo lucido/polished chrome	Ø 33,7 mm
E04T40017.R2	cromo lucido/polished chrome	Ø 42,4 mm
E04T40019.R1	effetto acciaio inox/similar stainless steel	Ø 33,7 mm
E04T40019.R2	effetto acciaio inox/similar stainless steel	Ø 42,4 mm

I prezzi si intendono guarnizioni escluse/The prices are gaskets exluded

GUARNIZIONI PER MORSETTO Art. 40

GASKETS FOR CLAMP Art. 40



Codice/Code	Spessore vetro/Glass thickness
E04G40060	6 mm
E04G40067	6,76 mm
E04G40080	8 mm

Box: 08 pz/pcs

Morsetti per Balaustre e Parapetti

Clamps for Balustrades and Parapets



MORSETTO QUADRATO Art. 41

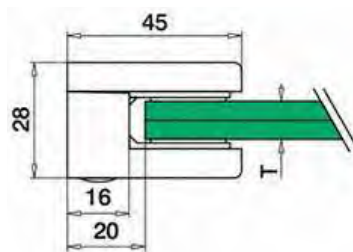
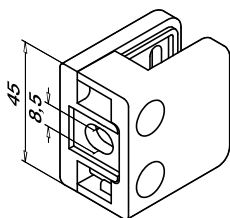
in acciaio AISI 304 / 316

Dimensioni 45x45 mm
Per vetro da 6 a 10 mm

SQUARED CLAMP Art. 41

in stainless steel AISI 304 / 316

Dimensions 45x45 mm
For glass thickness from 6 up to 10 mm



Box: 04 pz/pcs

Codice/Code	Materiale/Material	Finiture/Finishes
E04T41304	acciaio/stainless steel AISI 304	satinato/satin
E04T41316	acciaio/stainless steel AISI 316	satinato/satin

I prezzi si intendono guarnizioni escluse/The prices are gaskets excluded

MORSETTO QUADRATO Art. 41

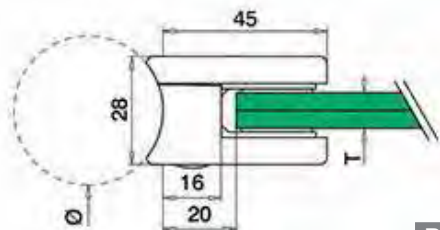
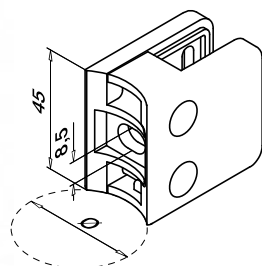
PER TUBO

in acciaio AISI 304 / 316
Dimensioni 45x45 mm
Per vetro da 6 a 10 mm

SQUARED CLAMP Art. 41

FOR TUBE

in stainless steel AISI 304 / 316
Dimensions 45x45 mm
For glass thickness from 6 up to 10 mm



Box: 04 pz/pcs

Codice/Code	Materiale/Material	Finiture/Finishes	Tubo/Tube
E04T41304.R2	acciaio/stainless steel AISI 304	satinato/satin	Ø 42,4 mm
E04T41304.R3	acciaio/stainless steel AISI 304	satinato/satin	Ø 48,3 mm
E04T41316.R2	acciaio/stainless steel AISI 316	satinato/satin	Ø 42,4 mm
E04T41316.R3	acciaio/stainless steel AISI 316	satinato/satin	Ø 48,3 mm

I prezzi si intendono guarnizioni escluse/The prices are gaskets excluded

GUARNIZIONI PER MORSETTO

Art. 41

GASKETS FOR CLAMP

Art. 41



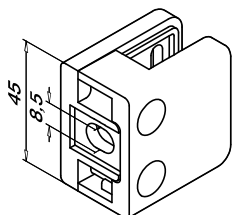
Box: 08 pz/pcs

Codice/Code	Spessore vetro/Glass thickness
E04G41060	6 mm
E04G41067	6,76 mm
E04G41080	8 mm
E04G41087	8,76 mm
E04G41095	9,52 mm
E04G41100	10 mm

MORSETTO QUADRATO Art. 41

in Zama

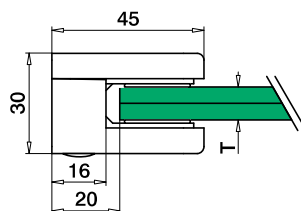
Dimensioni 45x45 mm
Per vetro da 6 a 10 mm



SQUARED CLAMP Art. 41

in Zamak

Dimensions 45x45 mm
For glass thickness from 6 up to 10 mm



Box: 04 pz/pcs

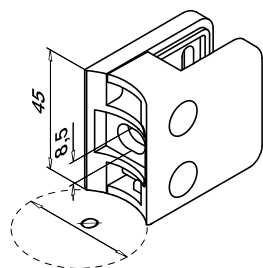
Codice/Code	Finiture/Finishes
E04T41000	zama grezzo/raw zamak
E04T41016	cromo opaco/opaque chrome
E04T41017	cromo lucido/polished chrome
E04T41019	effetto acciaio inox/similar stainless steel
E04T41031	nero RAL 9005/RAL 9005 black
E04T41032	bianco RAL 9016/RAL 9016 white
E04T41036	grigio alluminio RAL 9006/RAL 9006 grey aluminium

I prezzi si intendono guarnizioni escluse/The prices are gaskets excluded

MORSETTO QUADRATO Art. 41 PER TUBO

in Zama

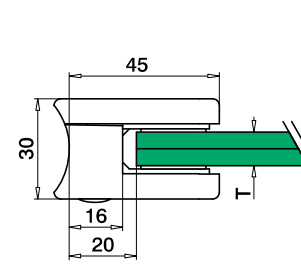
Dimensioni 45x45 mm
Per vetro da 6 a 10 mm



SQUARED CLAMP Art. 41 FOR TUBE

in Zamak

Dimensions 45x45 mm
For glass thickness from 6 up to 10 mm



Box: 04 pz/pcs

Codice/Code	Finiture/Finishes	Ø Tubo/Tube
E04T41000.R2	zama grezzo/raw zamak	Ø 42,4 mm
E04T41017.R2	cromo lucido/polished chrome	Ø 42,4 mm
E04T41019.R2	effetto acciaio inox/similar stainless steel	Ø 42,4 mm

I prezzi si intendono guarnizioni escluse/The prices are gaskets excluded

GUARNIZIONI PER MORSETTO Art. 41

GASKETS FOR CLAMP Art. 41



Box: 08 pz/pcs

Codice/Code	Spessore vetro/Glass thickness
E04G41060	6 mm
E04G41067	6,76 mm
E04G41080	8 mm
E04G41087	8,76 mm
E04G41095	9,52 mm
E04G41100	10 mm

Morsetti per Balaustre e Parapetti

Clamps for Balustrades and Parapets



MORSETTO MEZZO TONDO Art. 42

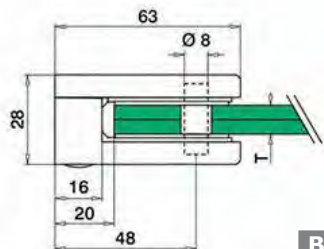
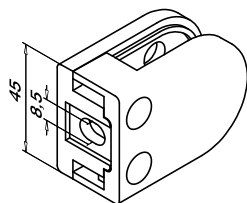
in acciaio AISI 304 / 316

Dimensioni 45x63 mm
Per vetro da 6 a 10 mm

HALF MOON CLAMP Art. 42

in stainless steel AISI 304 / 316

Dimensions 45x63 mm
For glass thickness from 6 up to 10 mm



Box: 04 pz/pcs

Codice/Code	Materiale/Material	Finiture/Finishes
E04T42304	acciaio/stainless steel AISI 304	satinato/satin
E04T42316	acciaio/stainless steel AISI 316	satinato/satin
E04T42304.L	acciaio/stainless steel AISI 304	lucido/polished
E04T42316.L	acciaio/stainless steel AISI 316	lucido/polished

I prezzi si intendono guarnizioni escluse/The prices are gaskets excluded

MORSETTO MEZZO TONDO Art. 42

PER TUBO

in acciaio AISI 304 / 316

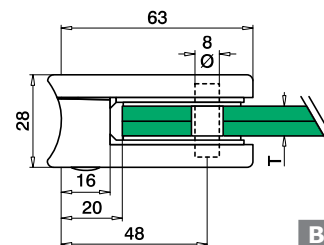
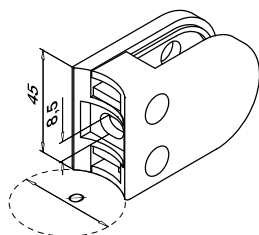
Dimensioni 45x63 mm
Per vetro da 6 a 10 mm

HALF MOON CLAMP Art. 42

FOR TUBE

in stainless steel AISI 304 / 316

Dimensions 45x63 mm
For glass thickness from 6 up to 10 mm



Box: 04 pz/pcs

Codice/Code	Materiale/Material	Finiture/Finish	Ø Tubo/Tube
E04T42304.R2	acciaio/stainless steel AISI 304	satinato/satin	Ø 42,4 mm
E04T42304.R3	acciaio/stainless steel AISI 304	satinato/satin	Ø 48,3 mm
E04T42316.R2	acciaio/stainless steel AISI 316	satinato/satin	Ø 42,4 mm
E04T42316.R3	acciaio/stainless steel AISI 316	satinato/satin	Ø 48,3 mm
E04T42304.LR2	acciaio/stainless steel AISI 304	lucido/polished	Ø 42,4 mm
E04T42304.LR3	acciaio/stainless steel AISI 304	lucido/polished	Ø 48,3 mm
E04T42316.LR2	acciaio/stainless steel AISI 316	lucido/polished	Ø 42,4 mm
E04T42316.LR3	acciaio/stainless steel AISI 316	lucido/polished	Ø 48,3 mm

I prezzi si intendono guarnizioni escluse/The prices are gaskets excluded

GUARNIZIONI PER MORSETTO

Art. 42

GASKETS FOR CLAMP

Art. 42



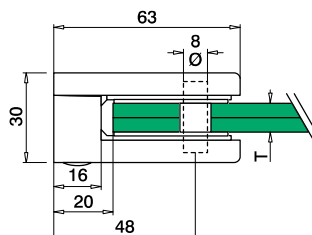
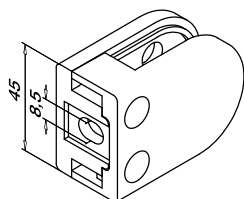
Box: 08 pz/pcs

Codice/Code	Spessore vetro/Glass thickness
E04G42060	6 mm
E04G42067	6,76 mm
E04G42080	8 mm
E04G42083	8,38 mm
E04G42087	8,76 mm
E04G42095	9,52 mm
E04G42100	10 mm

MORSETTO MEZZO TONDO Art. 42 *HALF MOON CLAMP Art. 42* in Zama *in Zamak*

Dimensioni 45x63 mm
Per vetro da 6 a 10 mm

*Dimensions 45x63 mm
For glass thickness from 6 up to 10 mm*



Box: 04 pz/pcs

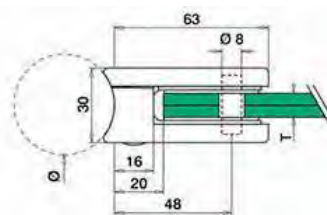
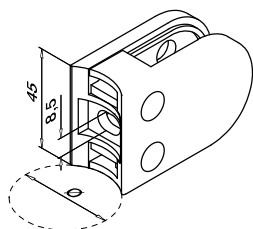
Codice/Code	Finiture/Finishes
E04T42000	zama grezzo/raw zamak
E04T42016	cromo opaco/opaque chrome
E04T42017	cromo lucido/polished chrome
E04T42019	effetto acciaio inox/similar stainless steel
E04T42031	nero RAL 9005/RAL 9005 black
E04T42032	bianco RAL 9016/white RAL 9016
E04T42036	grigio alluminio RAL 9006/RAL 9006 grey aluminium

I prezzi si intendono guarnizioni escluse/The prices are gaskets excluded

MORSETTO MEZZO TONDO Art. 42 *HALF MOON CLAMP Art. 42* PER TUBO *FOR TUBE* in Zama *in Zamak*

Dimensioni 45x63 mm
Per vetro da 6 a 10 mm

*Dimensions 45x63 mm
For glass thickness from 6 up to 10 mm*



Box: 04 pz/pcs

Codice/Code	Finiture/Finishes	Ø Tubo/Tube
E04T42000.R2	zama grezzo/raw zamak	Ø 42,4 mm
E04T42000.R3	zama grezzo/raw zamak	Ø 48,3 mm
E04T42017.R2	cromo lucido/polished chrome	Ø 42,4 mm
E04T42017.R3	cromo lucido/polished chrome	Ø 48,3 mm
E04T42019.R2	effetto acciaio inox/similar stainless steel	Ø 42,4 mm
E04T42019.R3	effetto acciaio inox/similar stainless steel	Ø 48,3 mm

I prezzi si intendono guarnizioni escluse/The prices are gaskets excluded

GUARNIZIONI PER MORSETTO Art. 42 *GASKETS FOR CLAMP Art. 42*



Box: 08 pz/pcs

Codice/Code	Spessore vetro/Glass thickness
E04G42060	6 mm
E04G42067	6,76 mm
E04G42080	8 mm
E04G42083	8,38 mm
E04G42087	8,76 mm
E04G42095	9,52 mm
E04G42100	10 mm

Morsetti per Balaustre e Parapetti

Clamps for Balustrades and Parapets

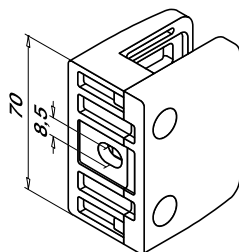


MORSETTO RETTANGOLARE Art. 43

in acciaio AISI 304 / 316

Dimensioni 70x55 mm

Per vetro da 9,52 a 17,52 mm

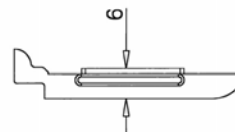
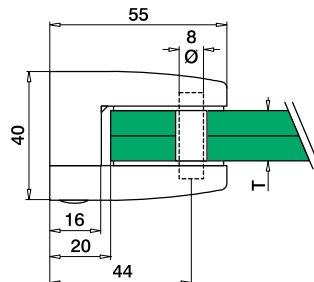


RECTANGULAR CLAMP Art. 43

in stainless steel AISI 304 / 316

Dimensions 70x55 mm

For glass thickness from 9,52 up to 17,52 mm



Box: 04 pz/pcs

Codice/Code	Materiale/Material	Finiture/Finishes
E04T43304	acciaio/stainless steel AISI 304	satinato/satin
E04T43316	acciaio/stainless steel AISI 316	satinato/satin

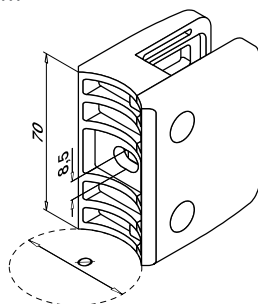
I prezzi si intendono guarnizioni escluse/The prices are gaskets exluded

MORSETTO RETTANGOLARE Art. 43 PER TUBO

in acciaio AISI 304 / 316

Dimensioni 70x55 mm

Per vetro da 9,52 a 17,52 mm

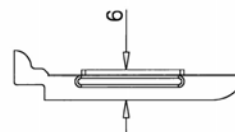
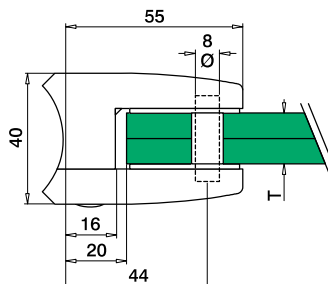


RECTANGULAR CLAMP Art. 43 FOR TUBE

in stainless steel AISI 304 / 316

Dimensions 70x55 mm

For glass thickness from 9,52 up to 17,52 mm



Box: 04 pz/pcs

Codice/Code	Materiale/Material	Finiture/Finishes	Ø Tubo/Tube
E04T43304.R3	acciaio/stainless steel AISI 304	satinato/satin	Ø 48,3 mm
E04T43316.R3	acciaio/stainless steel AISI 316	satinato/satin	Ø 48,3 mm

I prezzi si intendono guarnizioni escluse/The prices are gaskets exluded

GUARNIZIONI PER MORSETTO Art. 43

GASKETS FOR CLAMP Art. 43

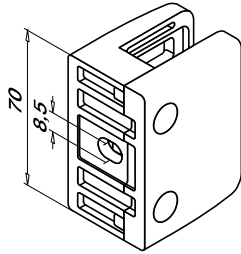


Box: 08 pz/pcs

Codice/Code	Spessore vetro/Glass thickness
E04G43095	9,52 mm
E04G43115	11,52 mm
E04G43120	12 mm
E04G43127	12,76 mm
E04G43135	13,52 mm
E04G43150	15 mm
E04G43167	16,76 mm
E04G43175	17,52 mm

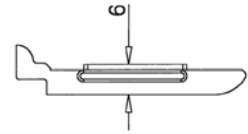
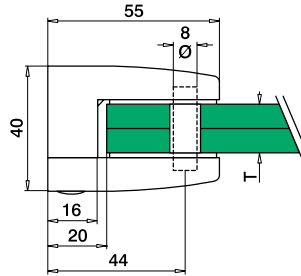
MORSETTO RETTANGOLARE Art. 43 in Zama

Dimensioni 70x55 mm
Per vetro da 9,52 a 17,52 mm



RECTANGULAR CLAMP Art. 43 in Zamak

Dimensions 70x55 mm
For glass thickness from 11,52 up to 17,52 mm



Box: 04 pz/pcs

Codice/Code

E04T43000
E04T43019

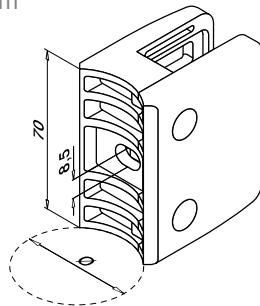
Finiture/Finishes

zama grezzo/raw zamak
effetto acciaio inox/similar stainless steel

I prezzi si intendono guarnizioni escluse/The prices are gaskets exluded

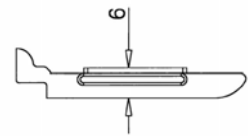
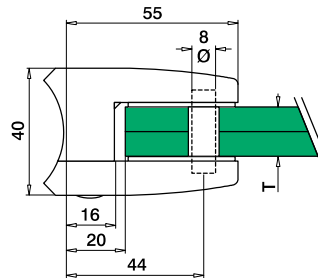
MORSETTO RETTANGOLARE Art. 43 PER TUBO

Dimensioni 70x55 mm
Per vetro da 9,52 a 17,52 mm



RECTANGULAR CLAMP Art. 43 FOR TUBE in Zamak

Dimensions 70x55 mm
For glass thickness from 11,52 up to 17,52 mm



Box: 04 pz/pcs

Codice/Code

E04T43000.R3

Finiture/Finishes

zama grezzo/raw zamak

Ø Tubo/Tube

Ø 48,3 mm

I prezzi si intendono guarnizioni escluse/The prices are gaskets exluded

GUARNIZIONI PER MORSETTO Art. 43



Box: 08 pz/pcs

Codice/Code

E04G43095 9,52 mm
E04G43115 11,52 mm
E04G43120 12 mm
E04G43127 12,76 mm
E04G43135 13,52 mm
E04G43150 15 mm
E04G43167 16,76 mm
E04G43175 17,52 mm

Spessore vetro/Glass thickness

GASKETS FOR CLAMP Art. 43

Morsetti per Balaustre e Parapetti

Clamps for Balustrades and Parapets



MORSETTO MEZZO TONDO Art. 45

in acciaio AISI 304 / 316

Dimensioni 45x63 mm

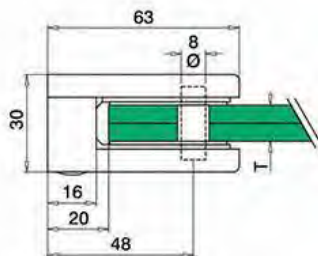
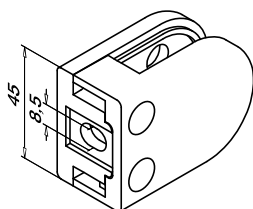
Per vetro da 10,76 a 12,76 mm

HALF MOON CLAMP Art. 45

in stainless steel AISI 304 / 316

Dimensions 45x63 mm

For glass thickness from 8 up to 12,76 mm



Box: 04 pz/pcs

Codice/Code	Materiale/Material	Finiture/Finishes
E04T45304	acciaio/stainless steel AISI 304	satinato/satin
E04T45316	acciaio/stainless steel AISI 316	satinato/satin

I prezzi si intendono guarnizioni escluse/The prices are gaskets excluded

MORSETTO MEZZO TONDO Art. 45 PER TUBO

in acciaio AISI 304 / 316

Dimensioni 45x63 mm

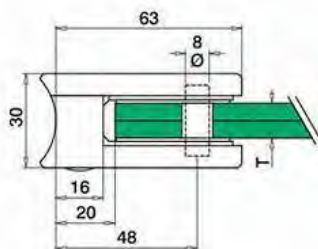
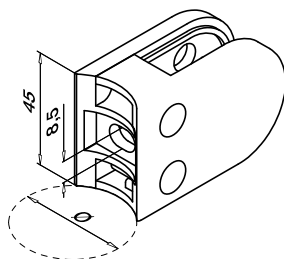
Per vetro da 10,76 a 12,76 mm

HALF MOON CLAMP Art. 45 FOR TUBE

in stainless steel AISI 304 / 316

Dimensions 45x63 mm

For glass thickness from 10,76 up to 12,76 mm



Box: 04 pz/pcs

Codice/Code	Materiale/Material	Finiture/Finishes	Ø Tubo/Tube
E04T45304.R2	acciaio/stainless steel AISI 304	satinato/satin	Ø 42,4 mm
E04T45304.R3	acciaio/stainless steel AISI 304	satinato/satin	Ø 48,3 mm
E04T45316.R2	acciaio/stainless steel AISI 316	satinato/satin	Ø 42,4 mm
E04T45316.R3	acciaio/stainless steel AISI 316	satinato/satin	Ø 48,3 mm

I prezzi si intendono guarnizioni escluse/The prices are gaskets excluded

GUARNIZIONI PER MORSETTO Art. 45

GASKETS FOR CLAMP Art. 45

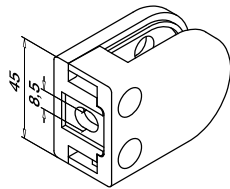


Codice/Code	Spessore vetro/Glass thickness
E04G45107	10,76 mm
E04G45115	11,52 mm
E04G45120	12 mm
E04G45127	12,76 mm

Box: 08 pz/pcs

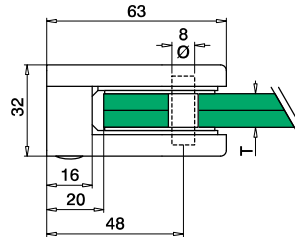
MORSETTO MEZZO TONDO Art. 45 in Zama

Dimensioni 45x63 mm
Per vetro da 10,76 a 12,76 mm



HALF MOON CLAMP Art. 45 in Zamak

Dimensions 45x63 mm
For glass thickness from 8 up to 12,76 mm



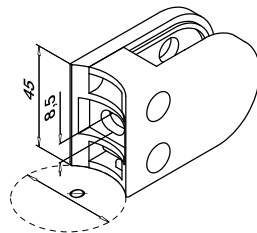
Box: 04 pz/pcs

Codice/Code	Finiture/Finishes
E04T45000	zama grezzo/raw zamak
E04T45019	effetto acciaio inox/similar stainless steel
E04T45036	grigio alluminio RAL 9006/RAL 9006 grey aluminium

I prezzi si intendono guarnizioni escluse/The prices are gaskets exluded

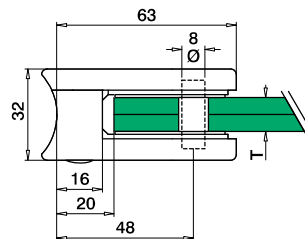
MORSETTO MEZZO TONDO Art. 45 PER TUBO

Dimensioni 45x63 mm
Per vetro da 10,76 a 12,76 mm



HALF MOON CLAMP Art. 45 FOR TUBE

Dimensions 45x63 mm
For glass thickness from 10,76 up to 12,76 mm



Box: 04 pz/pcs

Codice/Code	Finiture/Finishes	Ø Tubo/Tube
E04T45000.R2	zama grezzo/raw zamak	Ø 42,4 mm
E04T45000.R3	zama grezzo/raw zamak	Ø 48,3 mm
E04T45019.R2	effetto acciaio inox/similar stainless steel	Ø 42,4 mm
E04T45019.R3	effetto acciaio inox/similar stainless steel	Ø 48,3 mm

I prezzi si intendono guarnizioni escluse/The prices are gaskets exluded

GUARNIZIONI PER MORSETTO Art. 45

GASKETS FOR CLAMP Art. 45



Codice/Code	Spessore vetro/Glass thickness
E04G45107	10,76 mm
E04G45115	11,52 mm
E04G45120	12 mm
E04G45127	12,76 mm

Box: 08 pz/pcs

Morsetti per Balaustre e Parapetti

Clamps for Balustrades and Parapets

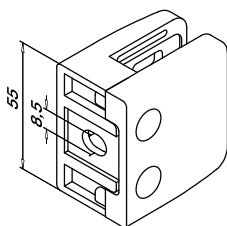


MORSETTO QUADRATO Art. 46

in acciaio AISI 304 / 316

Dimensioni 55x55 mm

Per vetro da 8 a 12,76 mm

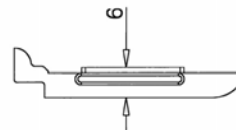
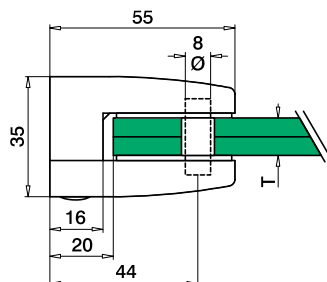


SQUARED CLAMP Art. 46

in stainless steel AISI 304 / 316

Dimensions 55x55 mm

For glass thickness from 8 up to 12,76 mm



Box: 04 pz/pcs

Codice/Code	Materiale/Material	Finiture/Finishes
E04T46304	acciaio/stainless steel AISI 304	satinato/satin
E04T46316	acciaio/stainless steel AISI 316	satinato/satin

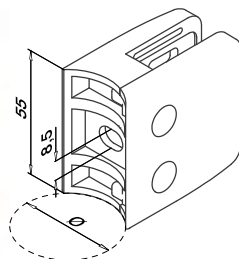
I prezzi si intendono guarnizioni escluse/The prices are gaskets excluded

MORSETTO QUADRATO Art. 46 PER TUBO

in acciaio AISI 304 / 316

Dimensioni 55x55 mm

Per vetro da 8 a 12,76 mm

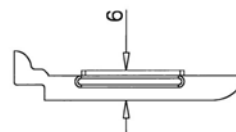
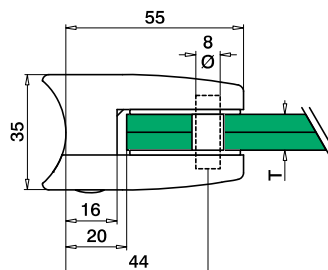


SQUARED CLAMP Art. 46 FOR TUBE

in stainless steel AISI 304 / 316

Dimensions 55x55 mm

For glass thickness from 8 up to 12,76 mm



Box: 04 pz/pcs

Codice/Code	Materiale/Material	Finiture/Finishes	Ø Tubo/Tube
E04T46304.R2	acciaio/stainless steel AISI 304	satinato/satin	Ø 42,4 mm*
E04T46304.R3	acciaio/stainless steel AISI 304	satinato/satin	Ø 48,3 mm
E04T46316.R2	acciaio/stainless steel AISI 316	satinato/satin	Ø 42,4 mm*
E04T46316.R3	acciaio/stainless steel AISI 316	satinato/satin	Ø 48,3 mm

* non utilizzabili con angoli inferiori a 105°/not to be used with angles less than 105°

I prezzi si intendono guarnizioni escluse/The prices are gaskets excluded

GUARNIZIONI PER MORSETTO Art. 46

GASKETS FOR CLAMP Art. 46

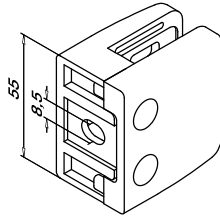


Box: 08 pz/pcs

Codice/Code	Spessore vetro/Glass thickness
E04G46080	8 mm
E04G46087	8,76 mm
E04G46095	9,52 mm
E04G46100	10 mm
E04G46107	10,76 mm
E04G46115	11,52 mm
E04G46120	12 mm
E04G46127	12,76 mm

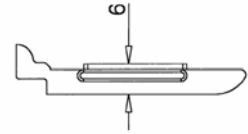
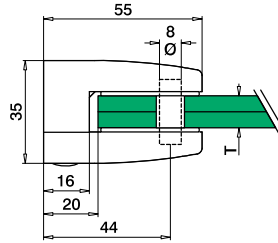
MORSETTO QUADRATO Art. 46 in Zama

Dimensioni 55x55 mm
Per vetro da 8 a 12,76 mm



SQUARED CLAMP Art. 46 in Zamak

Dimensions 55x55 mm
For glass thickness from 8 up to 12,76 mm



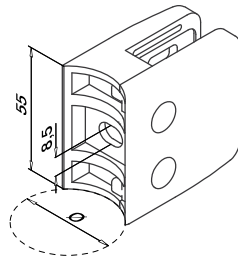
Box: 04 pz/pcs

Codice/Code	Finiture/Finishes
E04T46000	zama grezzo/raw zamak
E04T46016	cromo opaco/opaque chrome
E04T46019	effetto acciaio inox/similar stainless steel
E04T46031	nero RAL 9005/RAL 9005 black
E04T46032	bianco RAL 9016/RAL 9016 white
E04T46036	grigio alluminio RAL 9006/RAL 9006 grey aluminium

I prezzi si intendono guarnizioni escluse/The prices are gaskets excluded

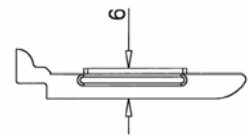
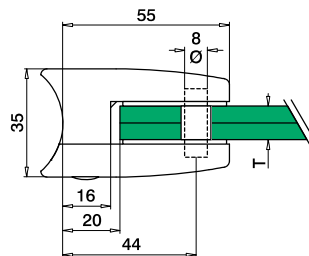
MORSETTO QUADRATO Art. 46 PER TUBO in Zama

Dimensioni 55x55 mm
Per vetro da 8 a 12,76 mm



SQUARED CLAMP Art. 46 FOR TUBE in Zamak

Dimensions 55x55 mm
For glass thickness from 8 up to 12,76 mm



Box: 04 pz/pcs

Codice/Code	Finiture/Finishes	Ø Tubo/Tube
E04T46000.R2	zama grezzo/raw zamak	Ø 42,4 mm*
E04T46000.R3	zama grezzo/raw zamak	Ø 48,3 mm
E04T46019.R2	effetto acciaio inox/similar stainless steel	Ø 42,4 mm*
E04T46019.R3	effetto acciaio inox/similar stainless steel	Ø 48,3 mm

* non utilizzabili con angoli inferiori a 105°/not to be used with angles less than 105°

I prezzi si intendono guarnizioni escluse/The prices are gaskets excluded

GUARNIZIONI PER MORSETTO Art. 46

GASKETS FOR CLAMP Art. 46



Box: 08 pz/pcs

Codice/Code	Spessore vetro/Glass thickness
E04G46080	8 mm
E04G46087	8,76 mm
E04G46095	9,52 mm
E04G46100	10 mm
E04G46107	10,76 mm
E04G46115	11,52 mm
E04G46120	12 mm
E04G46127	12,76 mm

Morsetti per Balaustre e Parapetti

Clamps for Balustrades and Parapets

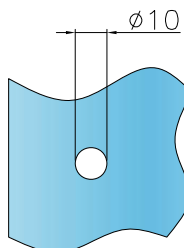


SPINE DI SICUREZZA PER MORSETTI



SECURITY BOLTS FOR CLAMPS

Foro sul vetro/Glass hole



Box: 04 pz/pcs

Codice/Code	Descrizione/Description
E04G00042	spina di sicurezza per morsetto Art.42/security bolt for clamp Art.42
E04G04344	spina di sicurezza per morsetto Art.43/security bolt for clamp Art.43
E04G04546	spina di sicurezza per morsetto Art.45-46/security bolt for clamp Art.44-46

FINITURE ZAMA

ZAMAK FINISHES



Codice/Code E04T..00
zama grezza
raw zamak



Codice/Code E04T..16
cromo opaco
opaque chrome



Codice/Code E04T..17
cromo lucido
polished chrome



Codice/Code E04T..19
effetto acciaio inox
similar stainless steel



Codice/Code E04T..31
nero RAL 9005
RAL 9005 black



Codice/Code E04T..32
bianco RAL 9016
RAL 9016 white



Codice/Code E04T..36
grigio alluminio RAL 9006
RAL 9006 grey aluminium



Morsetti di connessione Junction clamps

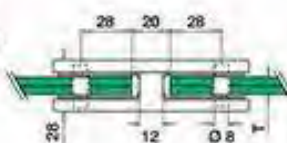
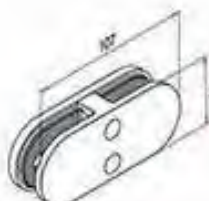


MORSETTO DI CONNESSIONE VETRO-VETRO A 180°

in acciaio AISI 304 / 316
Per vetro da 6 a 10 mm

JUNCTION CLAMP GLASS-TO-GLASS 180°

in stainless steel AISI 304 / 316
For glass thickness from 6 up to 10 mm



Box: 02 pz/pcs

Codice/Code	Materiale/Material	Finiture/Finishes
E04T18304	acciaio/stainless steel AISI 304	satinato/satin
E04T18316	acciaio/stainless steel AISI 316	satinato/satin

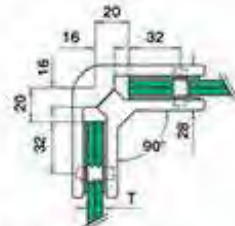
I prezzi si intendono guarnizioni escluse/The prices are gaskets excluded

MORSETTO DI CONNESSIONE VETRO-VETRO A 90°

in acciaio AISI 304 / 316
Per vetro da 6 a 10 mm

JUNCTION CLAMP GLASS-TO-GLASS 90°

in stainless steel AISI 304 / 316
For glass thickness from 6 up to 10 mm



Box: 02 pz/pcs

Codice/Code	Materiale/Material	Finiture/Finishes
E04T09304	acciaio/stainless steel AISI 304	satinato/satin
E04T09316	acciaio/stainless steel AISI 316	satinato/satin

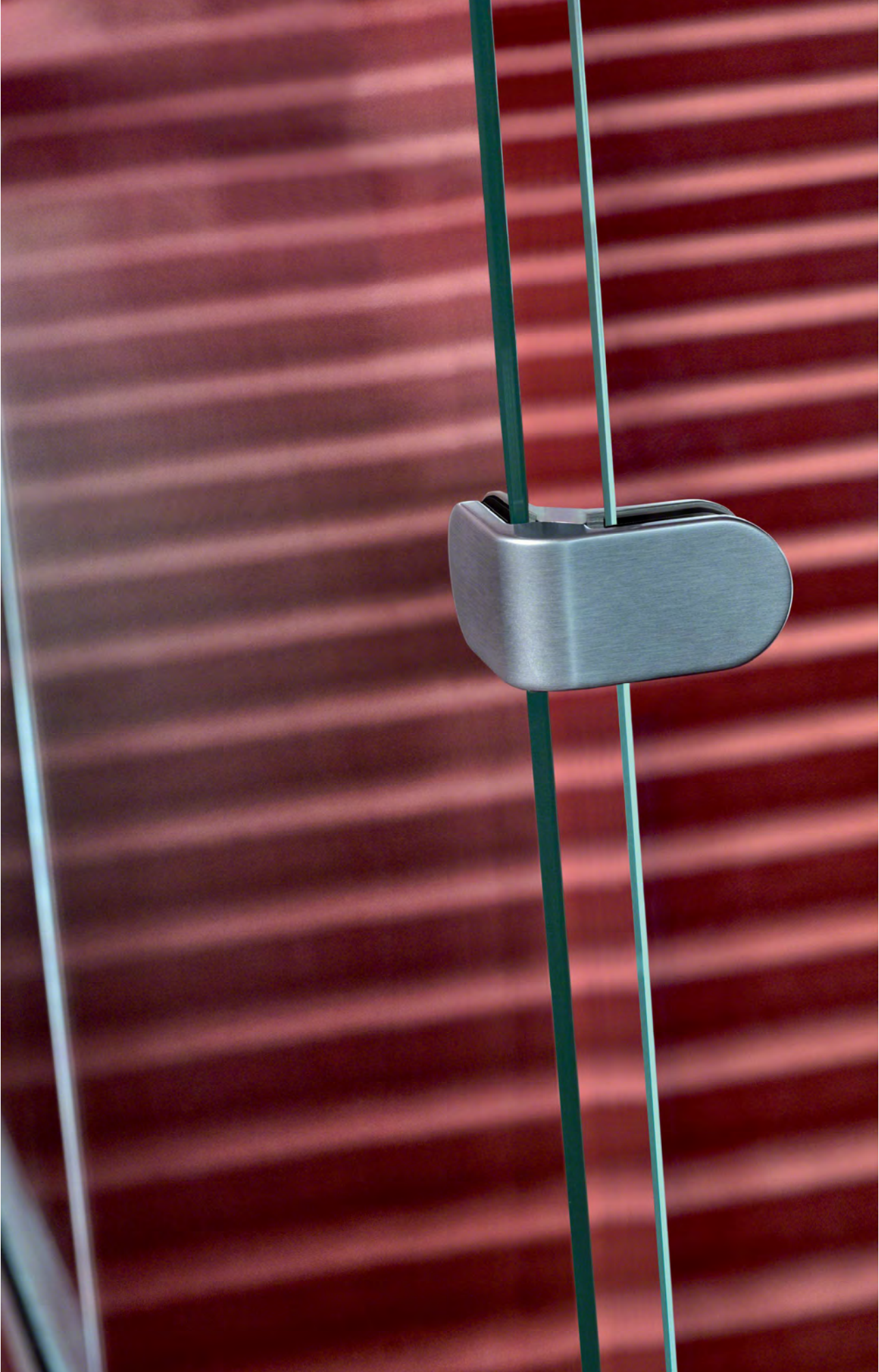
I prezzi si intendono guarnizioni escluse/The prices are gaskets excluded

GUARNIZIONI PER MORSETTO Art. 42

GASKETS FOR CLAMP Art. 42



Codice/Code	Spessore vetro/Glass thickness
E04G42060	6 mm
E04G42067	6,76 mm
E04G42080	8 mm
E04G42083	8,38 mm
E04G42087	8,76 mm
E04G42095	9,52 mm
E04G42100	10 mm



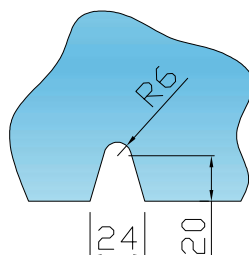
Morsetti per Box doccia

Clamps for Showers



Box: 01 pz/pcs

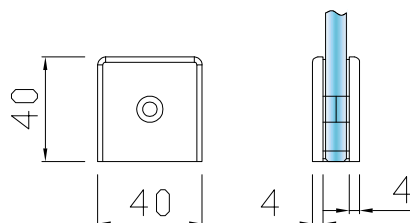
Lavorazione sul vetro
Processing on the glass



MORSETTO MM 40X40

Ottone
Spessore vetro mm 6-8-10

CLAMP 40X40 MM
Brass
Glass thickness 6-8-10 mm

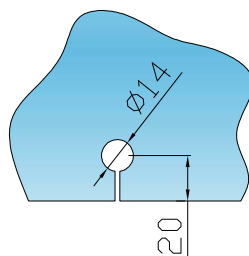


Codice / Code	Finiture / Finishes
E04M01715	cromo lucido/polished chrome
E04M01716	cromo opaco/opaque chrome
E04M01720	simile acciaio inox/similar stainless steel
E04M01713	oro lucido/polished gold
E04M01711	oro satinato/satin gold



Box: 01 pz/pcs

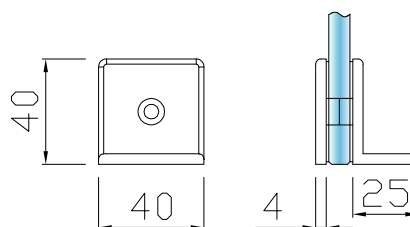
Lavorazione sul vetro
Processing on the glass



MORSETTO A "L" MM 40X40 VETRO-MURO

Ottone
Spessore vetro mm 6-8-10

**"L" SHAPED GLASS-TO-WALL
CLAMP 40X40 MM**
Brass
Glass thickness 6-8-10 mm

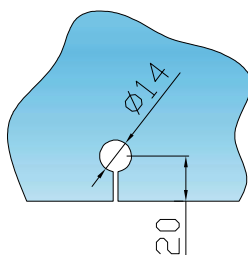


Codice / Code	Finiture / Finishes
E04M04715	cromo lucido/polished chrome
E04M04716	cromo opaco/opaque chrome
E04M04720	simile acciaio inox/similar stainless steel
E04M04713	oro lucido/polished gold
E04M04711	oro satinato/satin gold



Box: 01 pz/pcs

Lavorazione sul vetro
Processing on the glass

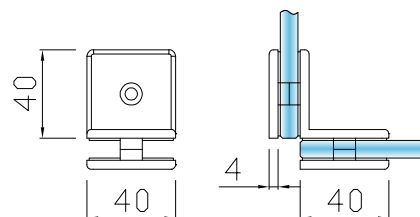


MORSETTO A "L" MM 40X40 VETRO-VETRO

Ottone
Spessore vetro mm 6-8-10

"L" SHAPED GLASS-TO-GLASS CLAMP 40X40 MM

Brass
Glass thickness 6-8-10 mm

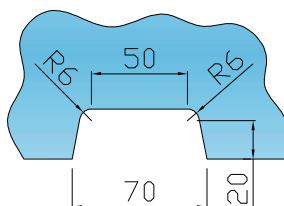


Codice/Code	Finiture/Finishes
E04M06715	cromo lucido/polished chrome
E04M06716	cromo opaco/opaque chrome
E04M06720	simile acciaio inox/similar stainless steel
E04M06713	oro lucido/polished gold
E04M06711	oro satinato/satin gold



Box: 01 pz/pcs

Lavorazione sul vetro
Processing on the glass

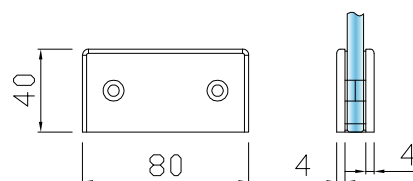


MORSETTO MM 40X80

Ottone
Spessore vetro mm 6-8-10

CLAMP 40X80 MM

Brass
Glass thickness 6-8-10 mm



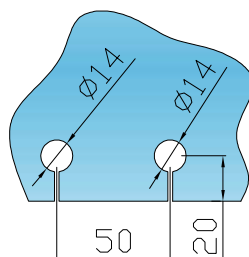
Codice/Code	Finiture/Finishes
E04M03715	cromo lucido/polished chrome
E04M03716	cromo opaco/opaque chrome
E04M03720	simile acciaio inox/similar stainless steel
E04M03713	oro lucido/polished gold
E04M03711	oro satinato/satin gold

Morsetti per Box doccia

Clamps for Showers



Lavorazione sul vetro
Processing on the glass

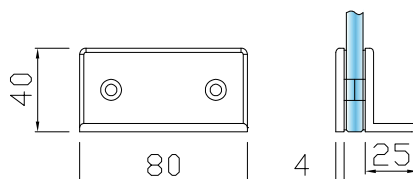


MORSETTO A "L" MM 40X80 VETRO-MURO

Ottone
Spessore vetro mm 6-8-10

"L" SHAPED GLASS-TO-WALL CLAMP 40X80 MM

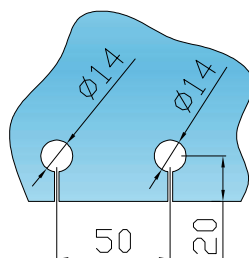
Brass
Glass thickness 6-8-10 mm



Codice/Code	Finiture/Finishes
E04M05715	cromo lucido/polished chrome
E04M05716	cromo opaco/opaque chrome
E04M05720	simile acciaio inox/similar stainless steel
E04M05713	oro lucido/polished gold
E04M05711	oro satinato/satin gold



Lavorazione sul vetro
Processing on the glass

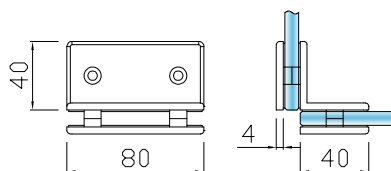


MORSETTO A "L" MM 40X80 VETRO-VETRO

Ottone
Spessore vetro mm 6-8-10

"L" SHAPED GLASS-TO-GLASS CLAMP 40X80 MM

Brass
Glass thickness 6-8-10 mm

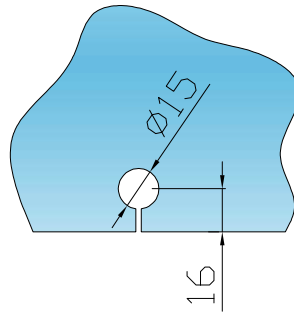


Codice/Code	Finiture/Finishes
E04M07715	cromo lucido/polished chrome
E04M07716	cromo opaco/opaque chrome
E04M07720	simile acciaio inox/similar stainless steel
E04M07713	oro lucido/polished gold
E04M07711	oro satinato/satin gold



Box: 01 pz/pcs

Lavorazione sul vetro
Processing on the glass

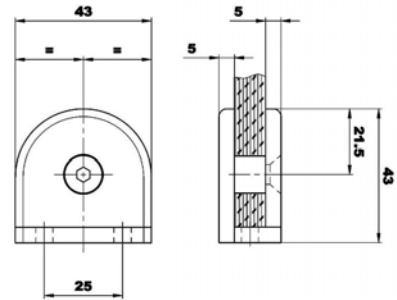


**MORSETTO MEZZOTONDO
IN OTTONE**

Spessore vetro mm 6-8-10-12

**HALF MOON CLAMP
IN BRASS**

Glass thickness mm 6-8-10-12



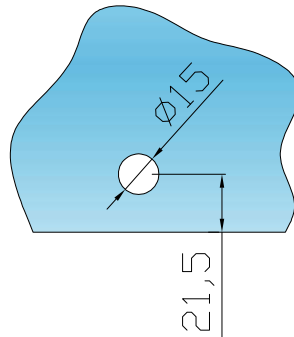
Codice/Code Finiture/Finishes

- | | |
|-----------|------------------------------|
| E04R01715 | cromo lucido/polished chrome |
| E04R01716 | cromo opaco/opaque chrome |
| E04R01713 | oro lucido/polished gold |



Box: 01 pz/pcs

Lavorazione sul vetro
Processing on the glass

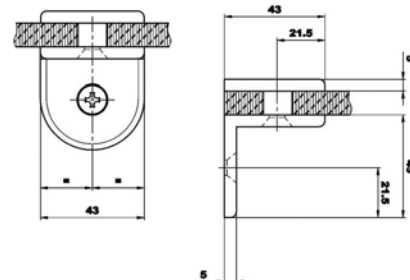


**MORSETTO MEZZOTONDO
A L VETRO/MURO IN OTTONE**

Spessore vetro mm 6-8-10-12

**L-SHAPED HALF MOON GLASS TO
WALL CLAMP IN BRASS**

Glass thickness mm 6-8-10-12



Codice/Code Finiture/Finishes

- | | |
|-----------|------------------------------|
| E04R02715 | cromo lucido/polished chrome |
| E04R02716 | cromo opaco/opaque chrome |
| E04R02713 | oro lucido/polished gold |

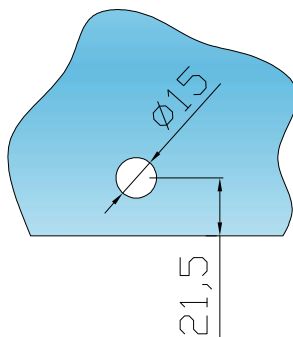
Morsetti per Box doccia

Clamps for Showers



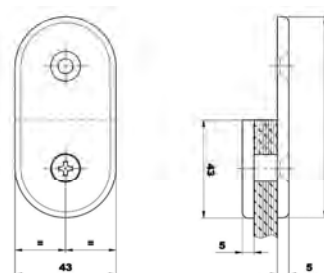
Box: 01 pz/pcs

Lavorazione sul vetro
Processing on the glass



**MORSETTO MEZZOTONDO PIANO
VETRO/MURO IN OTTONE**
Spessore vetro mm 6-8-10-12

**HALF MOON GLASS-TO-WALL
CLAMP IN BRASS**
Glass thickness mm 6-8-10-12

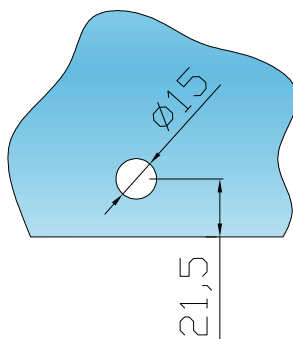


Codice / Code	Finiture / Finishes
E04R03715	Cromo lucido / polished chrome
E04R03716	Cromo opaco / opaque chrome
E04R03713	Oro lucido / polished gold



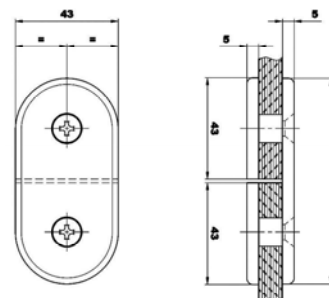
Box: 01 pz/pcs

Lavorazione sul vetro
Processing on the glass



**MORSETTO MEZZOTONDO PIANO
VETRO/VETRO IN OTTONE**
Spessore vetro mm 6-8-10-12

**HALF MOON GLASS-TO-GLASS
CLAMP IN BRASS**
Glass thickness mm 6-8-10-12

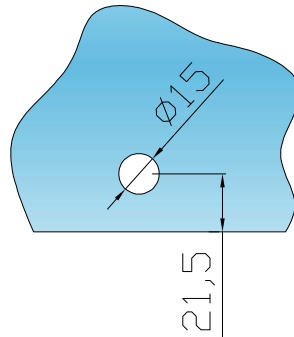


Codice / Code	Finiture / Finishes
E04R04715	Cromo lucido / polished chrome
E04R04716	Cromo opaco / opaque chrome
E04R04713	Oro lucido / polished gold



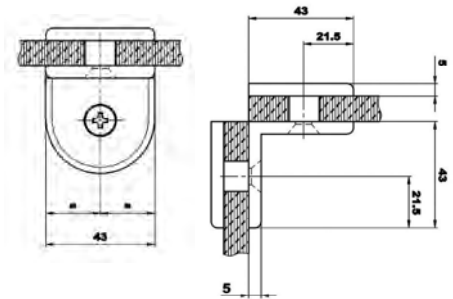
Box: 01 pz/pcs

Lavorazione sul vetro
Processing on the glass



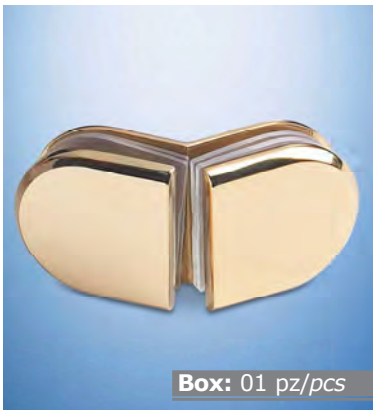
**MORSETTO MEZZOTONDO
A L VETRO/VETRO IN OTTONE**
Spessore vetro mm 6-8-10-12

**L-SHAPED HALF MOON GLASS-TO-
GLASS CLAMP IN BRASS**
Glass thickness mm 6-8-10-12



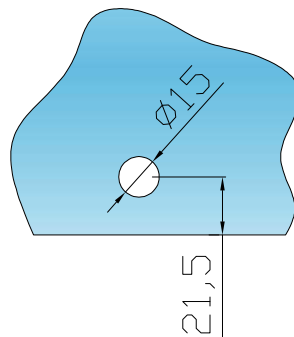
Codice / Code **Finiture / Finishes**

E04R05715	715 cromo lucido/polished chrome
E04R05716	716 cromo opaco/opaque chrome
E04R05713	713 oro lucido/polished gold



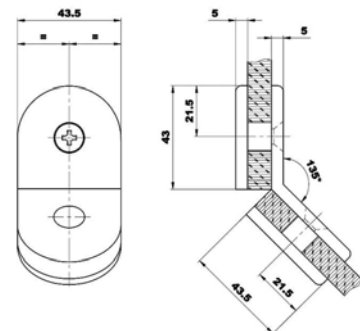
Box: 01 pz/pcs

Lavorazione sul vetro
Processing on the glass



**MORSETTO MEZZOTONDO
A 135° VETRO/VETRO IN OTTONE**
Spessore vetro mm 6-8-10-12

**HALF MOON GLASS-TO-GLASS
CLAMP 135° DEGREES IN BRASS**
Glass thickness mm 6-8-10-12

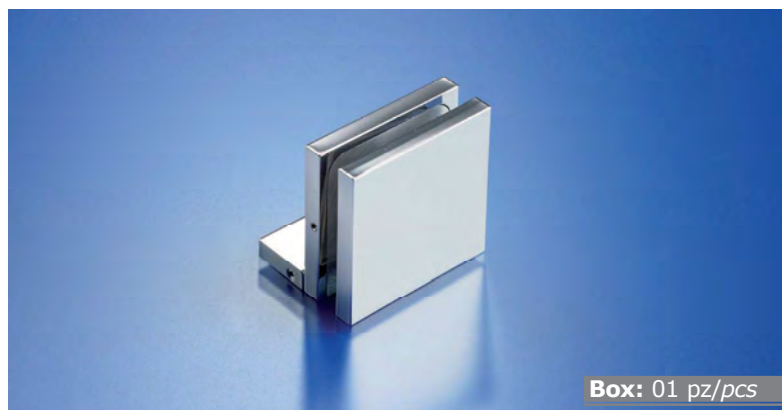


Codice / Code **Finiture / Finishes**

E04R06715	715 cromo lucido/polished chrome
E04R06716	716 cromo opaco/opaque chrome
E04R06713	713 oro lucido/polished gold

Morsetti per Box doccia

Clamps for Showers



Box: 01 pz/pcs

Codice / Code Finiture / Finishes

- E04M08715** cromo lucido/polished chrome
- E04M08716** cromo opaco/opaque chrome
- E04M08720** simile acciaio inox/similar stainless steel

MORSETTO QUADRATO MM 50X50 VETRO-MURO

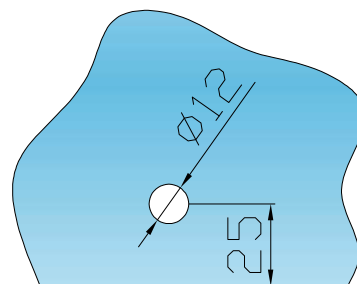
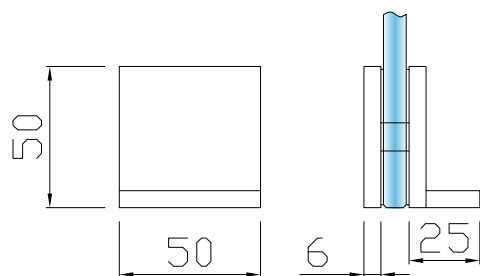
Ottone
Spessore vetro mm 6-8-10

SQUARED GLASS-TO-WALL CLAMP 50X50 MM

Brass
Glass thickness 6-8-10 mm

Spessore della cromatura 25 μ
Thickness of chromium plating 25 μ

Lavorazione sul vetro
Processing on the glass





Morsetti Linea GFS

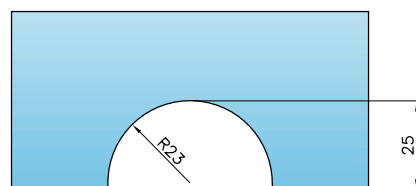
Clamps GFS Line



MORSETTO
Spessore vetro 10-12 mm

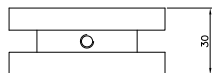
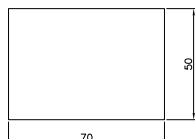
CLAMP
Glass thickness 10-12 mm

Lavorazione sul vetro
Processing on the glass



Box: 01 pz/pcs

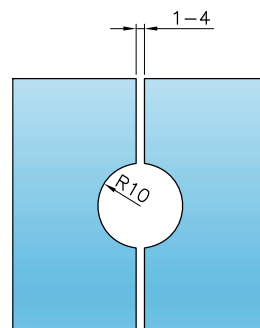
Codice / Code	Finiture / Finishes
GFS08001810	acciaio inox satinato/satin stainless steel
GFS08001812	acciaio inox lucido/polished stainless steel
GFS08001813	acciaio oro lucido (a richiesta) polished gold stainless steel (on request)
GFS08001814	acciaio bronzato (a richiesta) bronze stainless steel (on request)



MORSETTO DUE VOLUMI
Spessore vetro 10-12 mm

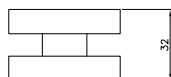
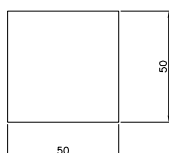
DOUBLE CLAMP
Glass thickness 10-12 mm

Lavorazione sul vetro
Processing on the glass



Box: 01 pz/pcs

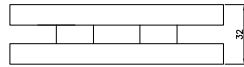
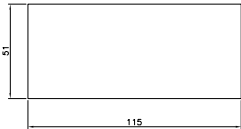
Codice / Code	Finiture / Finishes
GFS02201810	acciaio inox satinato/satin stainless steel
GFS02201812	acciaio inox lucido/polished stainless steel
GFS02201813	acciaio oro lucido (a richiesta) polished gold stainless steel (on request)
GFS02201814	acciaio bronzato (a richiesta) bronze stainless steel (on request)





Box: 01 pz/pcs

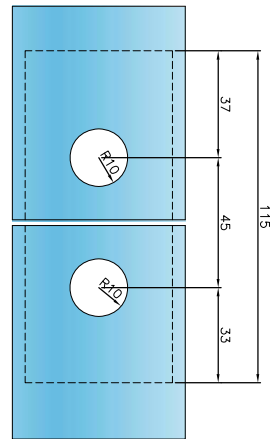
Codice / Code	Finiture / Finishes
GFS08101810	acciaio inox satinato/satin stainless steel
GFS08101812	acciaio inox lucido/polished stainless steel
GFS08101813	acciaio oro lucido (a richiesta) polished gold stainless steel (on request)
GFS08101814	acciaio bronzato (a richiesta) bronze stainless steel (on request)



MORSETTO DUE VOLUMI
Spessore vetro 10-12 mm

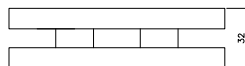
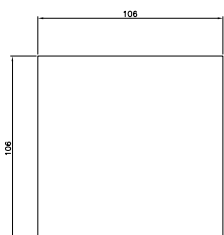
DOUBLE CLAMP
Glass thickness 10-12 mm

Lavorazione sul vetro
Processing on the glass



Box: 01 pz/pcs

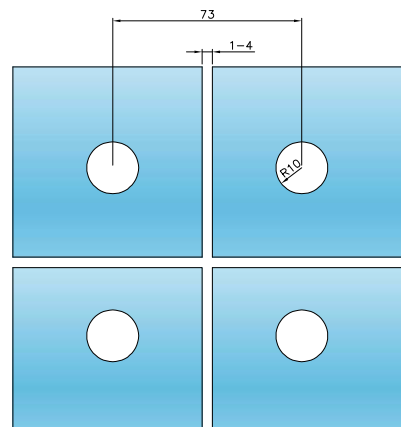
Codice / Code	Finiture / Finishes
GFS02401810	acciaio inox satinato/satin stainless steel
GFS02401812	acciaio inox lucido/polished stainless steel
GFS02401813	acciaio oro lucido (a richiesta) polished gold stainless steel (on request)
GFS02401814	acciaio bronzato (a richiesta) bronze stainless steel (on request)



MORSETTO QUATTRO VOLUMI
Spessore vetro 10-12 mm

4 PANELS FLAT CLAMP
Glass thickness 10-12 mm

Lavorazione sul vetro
Processing on the glass



Morsetti Linea GFS

Clamps GFS Line



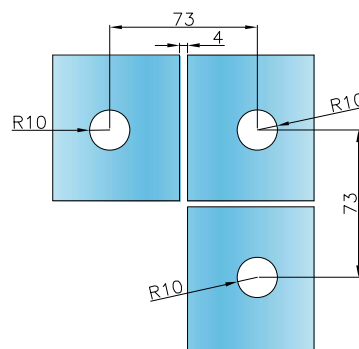
MORSETTO SOPRALUCE E LATERALE

Spessore vetro 10-12 mm

LATERAL AND TRANSOM CLAMP

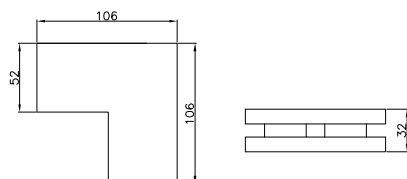
Glass thickness 10-12 mm

Lavorazione sul vetro
Processing on the glass



Box: 01 pz/pcs

Codice / Code	Finiture / Finishes
GFS08201810	acciaio inox satinato/satin stainless steel
GFS08201812	acciaio inox lucido/polished stainless steel
GFS08201813	acciaio oro lucido (a richiesta) polished gold stainless steel (on request)
GFS08201814	acciaio bronzato (a richiesta) bronze stainless steel (on request)



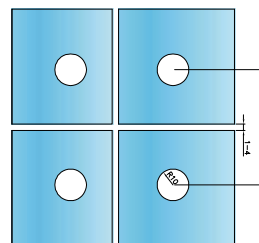
MORSETTO QUATTRO VOLUMI CON LATERALE

Spessore vetro 10-12 mm

TRANSOM WITH LATERAL CLAMP

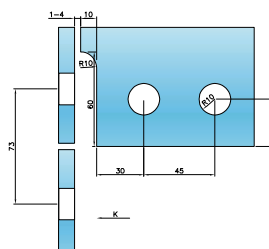
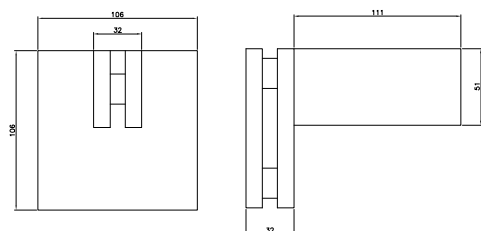
Glass thickness 10-12 mm

Lavorazione sul vetro
Processing on the glass



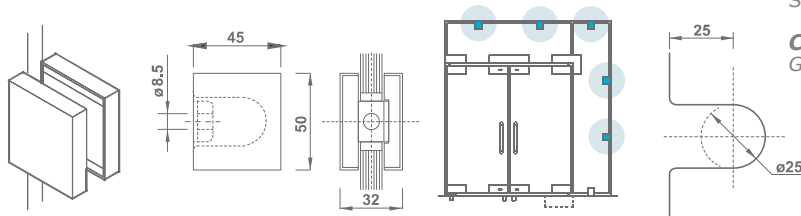
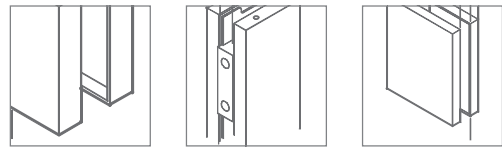
Box: 01 pz/pcs

Codice / Code	Finiture / Finishes
GFS08301810	acciaio inox satinato/satin stainless steel
GFS08301812	acciaio inox lucido/polished stainless steel
GFS08301813	acciaio oro lucido (a richiesta) polished gold stainless steel (on request)
GFS08301814	acciaio bronzato (a richiesta) bronze stainless steel (on request)



Morsetti Linea Standard

Clamps Standard Line



MORSETTO

Spessore vetro mm 8-10-12-1/2"

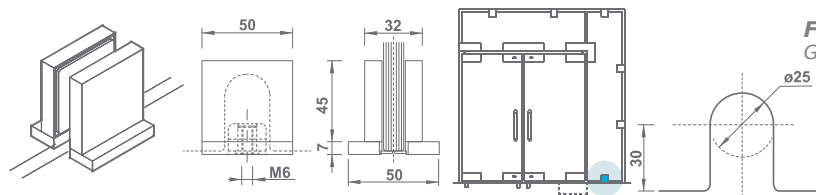
CLAMP

Glass thickness mm 8-10-12-1/2"

Codice/Code Finiture/Finishes

56000611	alluminio anodizzato naturale/natural anodized aluminium
56000620	alluminio anodizzato nero/black anodized aluminium
56000712	ottone lucido/polished brass
56000810	acciaio inox satinato/satin stainless steel
56000812	acciaio inox lucido/polished stainless steel

Box: 01 pz/pcs



MORSETTO A PAVIMENTO

Spessore vetro mm 8-10-12-1/2"

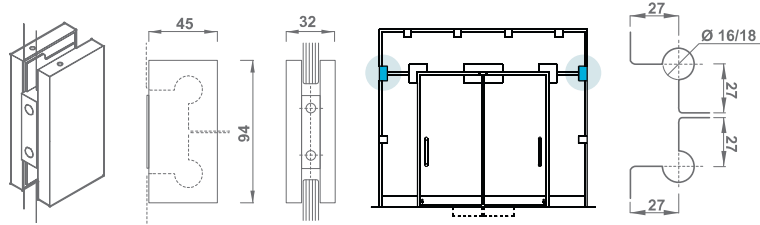
FLOOR CLAMP

Glass thickness mm 8-10-12-1/2"

Codice/Code Finiture/Finishes

56010611	alluminio anodizzato naturale/natural anodized aluminium
56010620	alluminio anodizzato nero/black anodized aluminium
56010712	ottone lucido/polished brass
56010810	acciaio inox satinato/satin stainless steel
56010812	acciaio inox lucido/polished stainless steel

Box: 01 pz/pcs



MORSETTO DUE VOLUMI A MURO

Spessore vetro mm 8-10-12-1/2"

DOUBLE WALL TO GLASS CLAMP

Glass thickness mm 8-10-12-1/2"

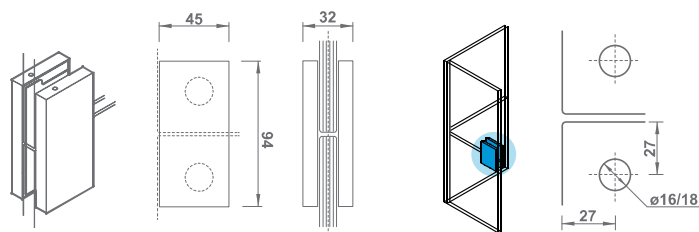
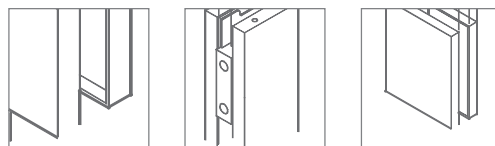
Codice/Code Finiture/Finishes

56210611	alluminio anodizzato naturale/natural anodized aluminium
56210620	alluminio anodizzato nero/black anodized aluminium
56210712	ottone lucido/polished brass
56210810	acciaio inox satinato/satin stainless steel
56210812	acciaio inox lucido/polished stainless steel

Box: 01 pz/pcs

Morsetti Linea Standard

Clamps Standard Line



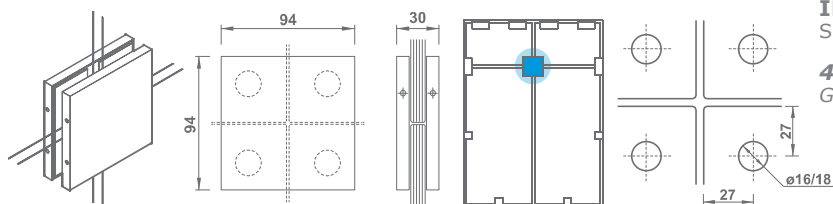
MORSETTO DUE VOLUMI LIBERO
Spessore vetro mm 8-10-12-1/2"

DOUBLE CLAMP WITHOUT RETURN
Glass thickness mm 8-10-12-1/2"

Codice/Code Finiture/Finishes

56240611	alluminio anodizzato naturale/natural anodized aluminium
56240620	alluminio anodizzato nero/black anodized aluminium
56240712	ottone lucido/polished brass
56240810	acciaio inox satinato/satin stainless steel
56240812	acciaio inox lucido/polished stainless steel

Box: 01 pz/pcs



MORSETTO QUATTRO VOLUMI IN PIANO

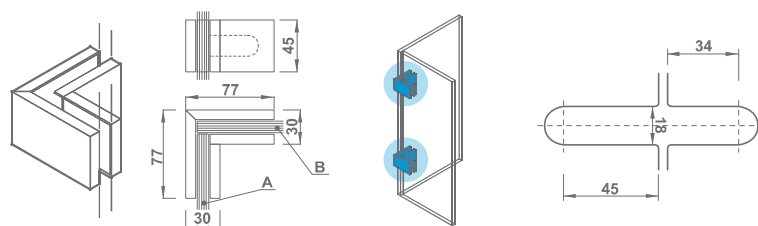
Spessore vetro mm 8-10-12-1/2"

4 PANELS FLAT CLAMP
Glass thickness mm 8-10-12-1/2"

Codice/Code Finiture/Finishes

56500611	alluminio anodizzato naturale/natural anodized aluminium
56500620	alluminio anodizzato nero/black anodized aluminium
56500712	ottone lucido/polished brass
56500810	acciaio inox satinato/satin stainless steel
56500812	acciaio inox lucido/polished stainless steel

Box: 01 pz/pcs



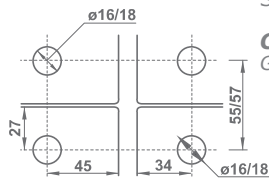
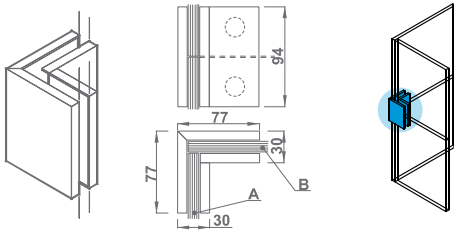
MORSETTO DUE VOLUMI A 90°
Spessore vetro mm 8-10-12-1/2"

DOUBLE CLAMP 90°
Glass thickness mm 8-10-12-1/2"

Codice/Code Finiture/Finishes

56300611	alluminio anodizzato naturale/natural anodized aluminium
56300620	alluminio anodizzato nero/black anodized aluminium
56300712	ottone lucido/polished brass
56300810	acciaio inox satinato/satin stainless steel
56300812	acciaio inox lucido/polished stainless steel

Box: 01 pz/pcs



**MORSETTO QUATTRO
VOLUMI A 90°**

Spessore vetro mm 8-10-12-1/2"

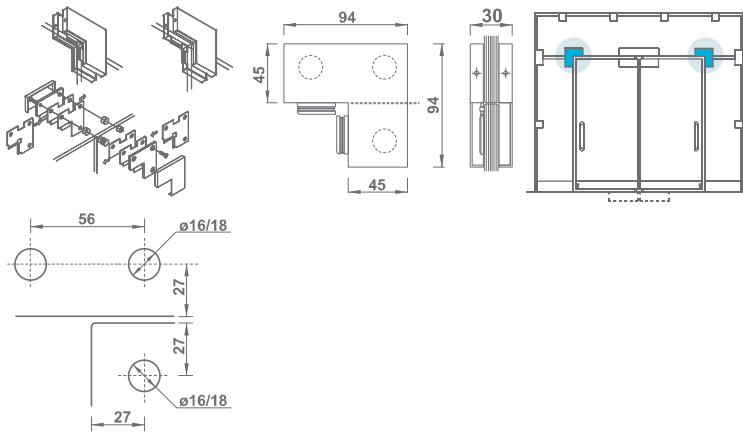
COLAMP 4 PANELS 90°

Glass thickness mm 8-10-12-1/2"

Codice/Code Finiture/Finishes

56400611	alluminio anodizzato naturale/natural anodized aluminium
56400620	alluminio anodizzato nero/black anodized aluminium
56400712	ottone lucido/polished brass
56400810	acciaio inox satinato/satin stainless steel
56400812	acciaio inox lucido/polished stainless steel

Box: 01 pz/pcs



**MORSETTO SOPRALUCE E
LATERALE**

Spessore vetro mm 8-10-12-1/2"

LATERAL TRANSOM CLAMP

Glass thickness mm 8-10-12-1/2"

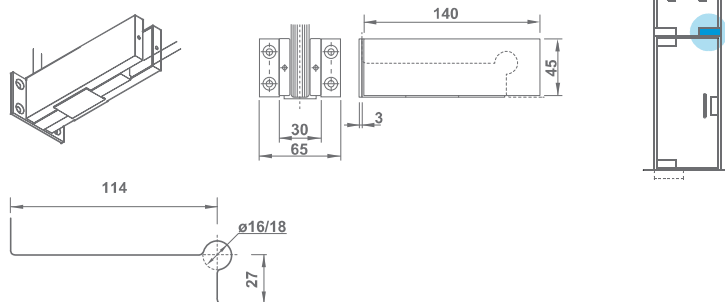
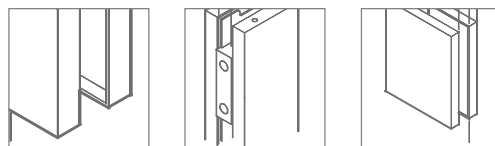
Codice/Code Finiture/Finishes

54610611	alluminio anodizzato naturale/natural anodized aluminium
54610620	alluminio anodizzato nero/black anodized aluminium
54610712	ottone lucido/polished brass
54610810	acciaio inox satinato/satin stainless steel
54610812	acciaio inox lucido/polished stainless steel

Box: 01 pz/pcs

Morsetti Linea Standard

Clamps Standard Line



REGGI SOPRALUCE

Spessore vetro mm 8-10-12-1/2"

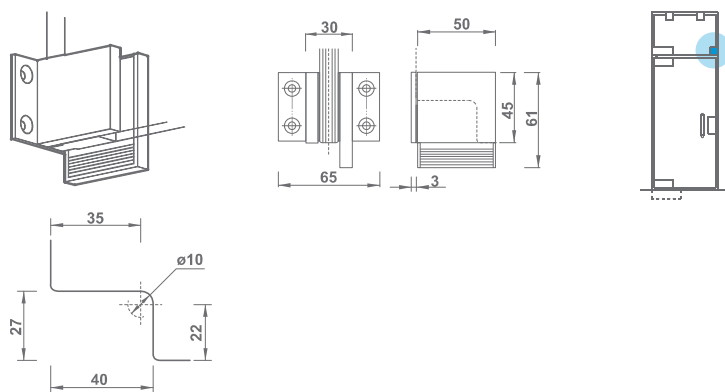
TRANSOM

Glass thickness mm 8-10-12-1/2"

Codice/Code	Finiture/Finishes
-------------	-------------------

53200611	alluminio anodizzato naturale/natural anodized aluminium
53200620	alluminio anodizzato nero/black anodized aluminium
53200712	ottone lucido/polished brass
53200810	acciaio inox satinato/satin stainless steel
53200812	acciaio inox lucido/polished stainless steel

Box: 01 pz/pcs



REGGI SOPRALUCE PICCOLO CON BATTUTA

Spessore vetro mm 8-10-12-1/2"

SMALL TRANSOM WITH STOP

Glass thickness mm 8-10-12-1/2"

Codice/Code	Finiture/Finishes
-------------	-------------------

53610611	alluminio anodizzato naturale/natural anodized aluminium
53610620	alluminio anodizzato nero/black anodized aluminium
53610712	ottone lucido/polished brass
53610810	acciaio inox satinato/satin stainless steel
53610812	acciaio inox lucido/polished stainless steel

Box: 01 pz/pcs



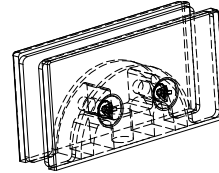
Box: 01 pz/pcs

**MORSETTO RETTANGOLARE
MM 70X35**

Acciaio AISI 304
Spessore vetro mm 8-10

RECTANGULAR CLAMP MM 70X35

Stainless steel AISI 304
Glass thickness mm 8-10



Codice/Code Finiture/Finishes

E04E01810 satinato/satin
E04E01812 lucido/polished

Lavorazione sul vetro
Processing on the glass

